

# Dome Lights

## PDM series

Refer to our website for product details.

CCS PDM

Search



You can also use your smartphone or cell phone.

For quick access.

Diffused Lighting  
Dome Lights

Provides diffused light evenly using a mechanism that combines a diffused lighting, coaxial lighting, and low-angle lighting



### Applications

Faulty plating inspection, inspection of a sealed target, inspection for foreign material attached to a glossy surface, character recognition and text inspection for glossy surfaces, dimension measuring for electronic parts, etc.

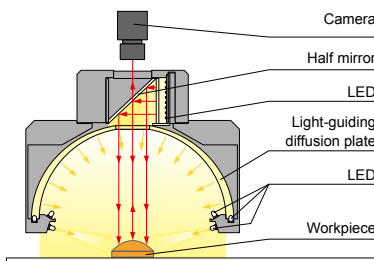
### Features

This Light Unit combines the three types: dome lighting, low-angle lighting, and coaxial lighting. It illuminates the workpiece with uniform diffused light.

We accept custom orders. Please feel free to inquire.

- Shape modifications
- Brightness increases
- Changes in wavelength, etc.

#### Example configuration (PDM-150-15)

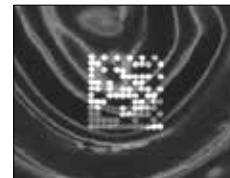


#### Imaging example: 2-D code imaging



Workpiece: Contact lens package

#### LED Ring Light



It is difficult to determine the 2-D code due to the glossy and wavy surface.

#### PDM-150-15RD2



It is possible to determine the 2-D code by evenly illuminating the surface.

### Lineup

Model name	LED color	Power consumption	Peak wavelength/ correlated color temperature	Options	Extension cables	Recommended Control Unit	Weight
PDM-150-15RD2	Red	24 V / 18 W	630 nm	-	FCB*1 Straight Cable	PD3	1,140 g
PDM-150-15SW2	White	24 V / 22 W	5,500 K		FCB-F 4-branch Cable		1,170 g
PDM-150-15BL2	Blue		470 nm		FCB-W 2-branch Cable		1,140 g
PDM-150-15GR2	Green		525 nm		FRCB Robot Cable		

Use a 3-channel Control Unit.

LED Properties: Spectral Distribution ▶ P.290

Extension Cables ▶ P.280

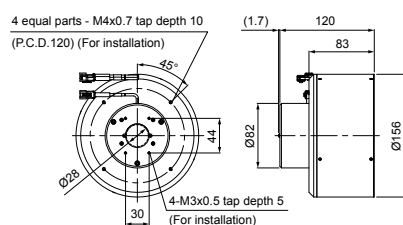
Control Unit Selection Guide ▶ P.229

List of Control Unit Specifications ▶ P.231

\*1 The cables with a model name that ends with "-ME7" or "-EL2" are not included.

### Dimensions (mm)

PDM-150-15RD2/SW2/BL2/GR2



Illumination part	Power consumption
Coaxial illumination part	Red: 3.1 W, White: 2.2 W, Blue/Green: 2.7 W
Dome illumination part	Red: 10.2 W, White: 14 W, Blue/Green: 13 W
Low-angle illumination part	Red: 4.6 W, White/Blue/Green: 6.1 W

If adjusting the intensity for each part separately, use a 3-channel Control Unit.

You can change the connectors of the Light Unit cable. Choose between M12 connectors and flying leads. Refer to P.5 for details.

You can inquire using our website.

Requests for Light Unit Selection

Requests for Loan Products

Requests for Estimates

Requests for a Catalog

Product Inquiries

Other Inquiries

Inquire on our website here.  
<http://www.ccs-grp.com/contact/>

Direct Lighting	LDR2 LDR2-LA LDR-LA1 SQR SQR-TP
Diffused Lighting	HPR2 LFR LKR FPR FPQ2 LDL2 LDLB HDL2 HL
Direct Lighting	TH2 (5 types) TH LFL HPD2 LDM2 LAV PDM LFX3 LFX3-PT LFX2 LFV3
Diffused Lighting	MSU MFU
Coaxial Lighting	PF
Water-proof Lighting	HLDR-IP/ IQ/HSL-PCL
Ultraviolet Lighting	UV2 UV LNSP-UV-FN
Infrared Lighting	IR2
Intensity Control	IU
Spot Lighting, Etc.	HLV2 LV LSP HFS/HFR HLV2-NR HLV2-3M-RGB-3W PFB2
Convergent Lighting	LNLP LNSP2 LNSP Coaxial Units LNSP-FN LN/LN-HK
Diffused Lighting	LNSD LND2 HLND LT LNV/HLDN
Oblique Angled Lighting	LNDG LNIS LNIS-FN
Lenses	Telecentric Lens Macro Lens